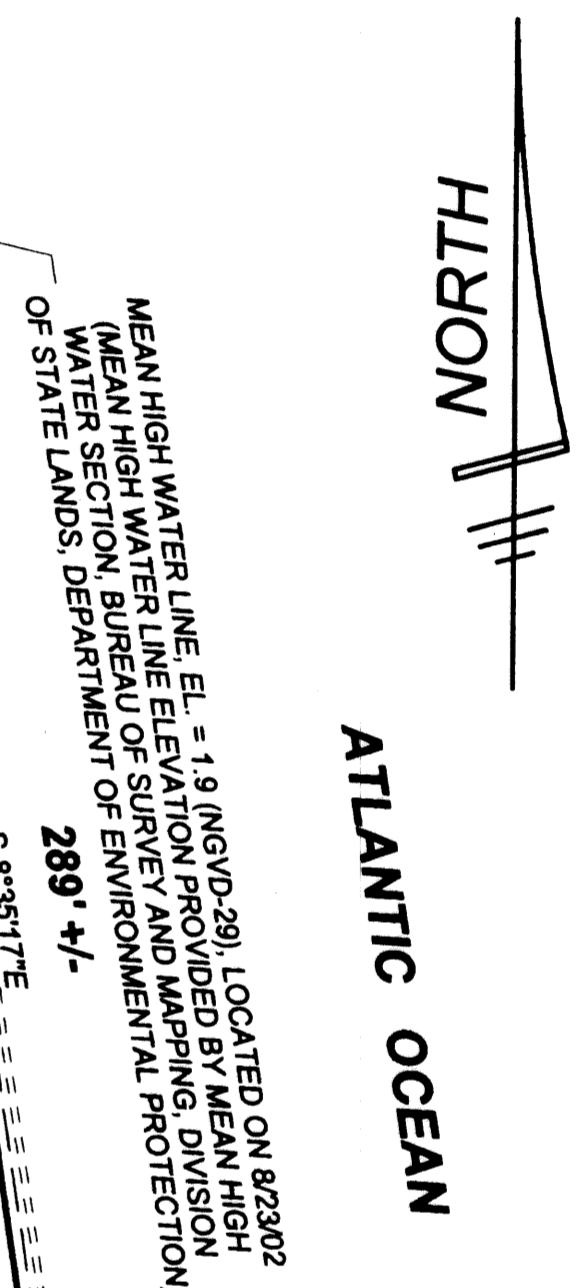
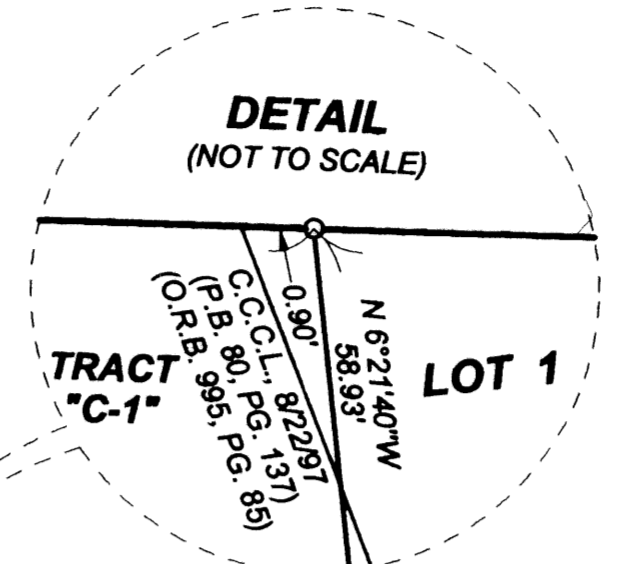
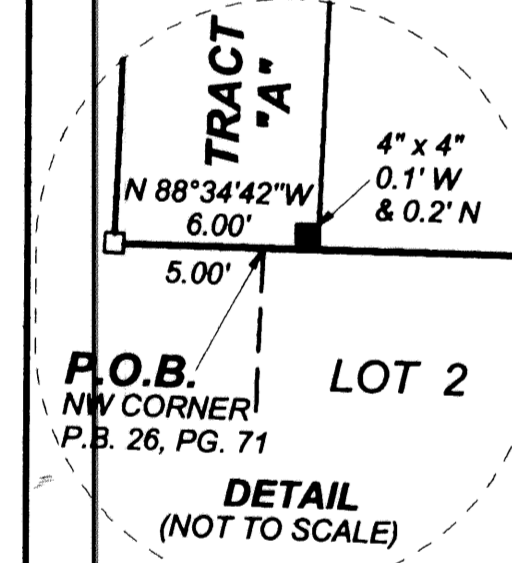
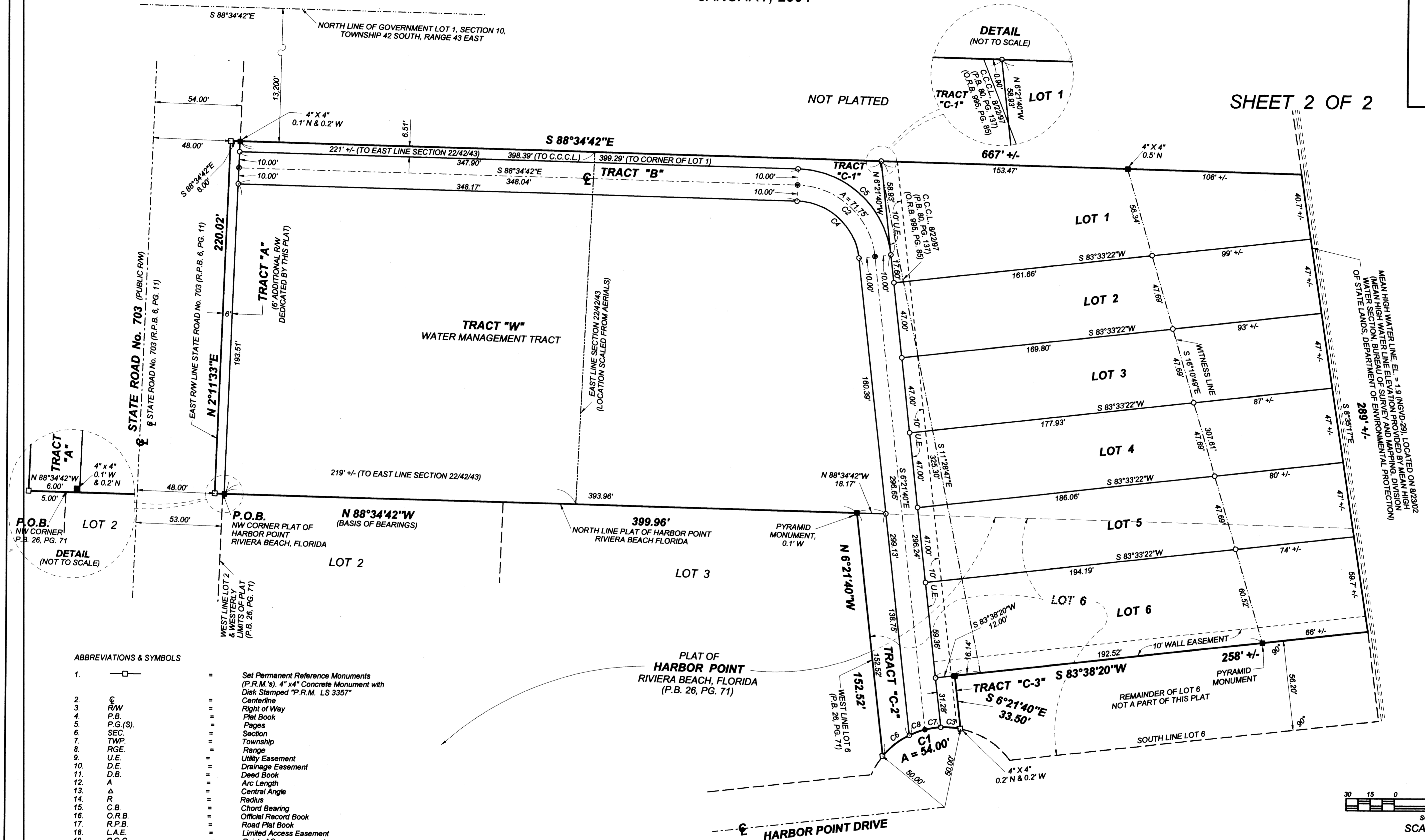


5050 OCEAN DRIVE REPLAT

BEING A REPLAT OF A PORTION OF LOT 6, ACCORDING TO THE PLAT OF HARBOR POINT RIVIERA BEACH, FLORIDA, AS RECORDED IN PLAT BOOK 26, PAGE 71, PALM BEACH COUNTY PUBLIC RECORDS, AND A PORTION OF GOVERNMENT LOT 1, LYING IN SECTIONS 22 AND 23, TOWNSHIP 42 SOUTH, RANGE 43 EAST, CITY OF RIVIERA BEACH, PALM BEACH COUNTY, FLORIDA
JANUARY, 2004

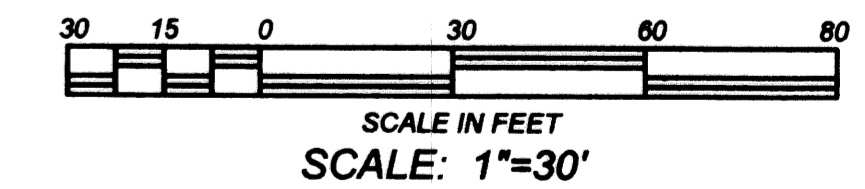
SHEET 2 OF 2



- ABBREVIATIONS & SYMBOLS
- 1. = Set Permanent Reference Monuments (P.R.M.'s). 4" x 4" Concrete Monument with Disk Stamped "P.R.M. LS 3357"
 - 2. = Centerline
 - 3. = Right of Way
 - 4. = Plat Book
 - 5. = Pages
 - 6. = Section
 - 7. = Township
 - 8. = Range
 - 9. = Utility Easement
 - 10. = Drainage Easement
 - 11. = Deed Book
 - 12. = Arc Length
 - 13. = Central Angle
 - 14. = Radius
 - 15. = Chord Bearing
 - 16. = Official Record Book
 - 17. = Road Plat Book
 - 18. = Limited Access Easement
 - 19. = Point of Commencement
 - 20. = Point of Beginning
 - 21. = Palm Beach County
 - 22. = Found
 - 23. = Easement
 - 24. = Northing
 - 25. = Easting
 - 26. = Set Nail & Disk Stamped "P.C.P. LS 3357"
 - 27. = Set 5/8" Iron Rod & Cap Stamped "Wallace LB 4569"
 - 28. = Fnd. Concrete Monument (as noted)
 - 29. = Coastal Construction Control Line
 - 30. = Baseline
 - 31. = Curve or "Curve 1" as shown on Curve Table

CURVE TABLE

Curve	Delta Angle	Radius	Arc	Tangent	Chord	Chord Bearing
1	61°52'56"	50.00'	54.00'	29.97'	51.42'	S 70°08'26" W
2	82°13'02"	50.00'	71.75'	43.63'	65.75'	S 47°28'11" E
3	14°01'04"	50.00'	12.23'	6.15'	12.20'	N 85°54'37" W
4	82°13'02"	40.00'	57.40'	34.90'	52.80'	S 47°28'11" E
5	82°13'02"	60.00'	86.10'	52.36'	78.90'	S 47°28'11" E
6	24°32'54"	50.00'	21.42'	10.88'	21.28'	S 51°29'28" W
7	11°28'15"	50.00'	10.03'	5.029'	10.01'	S 81°20'14" W
8	11°49'43"	50.00'	10.32'	5.180'	10.30'	S 69°40'45" W



5050 OCEAN DRIVE REPLAT

WALLACE SAVYIN
CORP. LICENSE NUMBER 1488

891 NORTHPOINT PARKWAY, SUITE 117, WEST PALM BEACH, FLORIDA 33411 (561) 646-4851

FIELD:	JOB No.: 85-695 "M"	F.B.:	PG.:
OFFICE: R.C.	DATE: JAN., 2004	DWG. No.:	85-695-2
CK'D:	REF: 5050.ZAK	SHEET	2 OF 2